

Flexible Payment Options

■ INSURANCE

■ MOTOR CLUBS

■ CASH

■ CHECK

■ MONEY ORDERS

■ CREDIT CARDS

Accepted Credit Cards

- Visa
- Mastercard
- American Express
- Discover

Customer satisfaction and loyalty is our highest priority. Our #1 goal is to provide the best customer experience by being compassionate and caring. Quickly addressing the needs of our customers by correctly identifying the issue and providing a resolution inside the scope of our services, or a referral to a reputable contractor if service needed is beyond what we provide. We are here to help you get back on the road quickly and economically, worry free.

FOR MORE INFORMATION:

517-862-2971



**SPARTAN EMERGENCY
ROADSIDE ASSISTANCE**

Mason, Michigan
Toll Free: 888-359-0444
Lansing: 517-862-2971
Jackson: 517-292-6003
Fax: 517-659-5973
Spartanroadside@outlook.com
Myspartanroadside.com



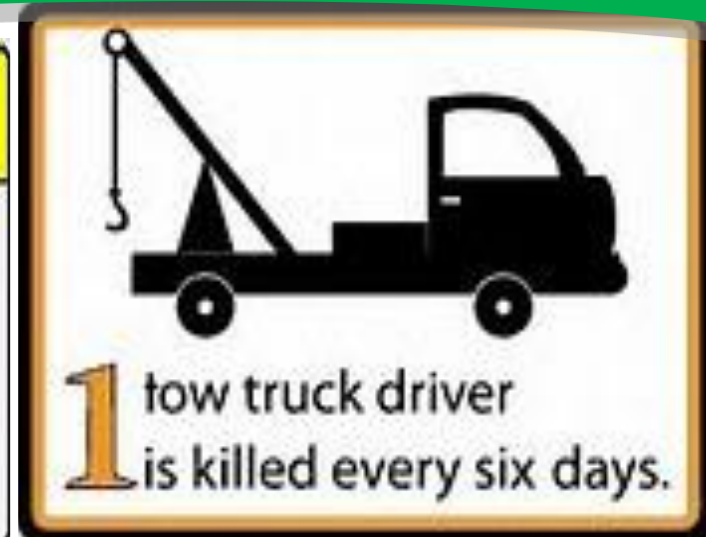
Spartan Emergency Roadside Assistance

FLAT TIRE-FUEL LOCKOUT-JUMP START

At **SPARTAN ROADSIDE** We handle everyday minor roadside mishaps, like **FLAT TIRES**, running out of **GAS**, **JUMPSTARTING** vehicles and **UNLOCKING** the doors when the keys are left inside.

MOVE OVER OR SLOW DOWN FOR STOPPED EMERGENCY VEHICLES

It's the Law



Keep your flashers on for safety

MOVE OVER!

MICHIGAN EMERGENCY VEHICLE CAUTION LAW

Michigan's Emergency Vehicle Caution Law, more commonly known as the Move Over Law, requires motorists to move over for stationary emergency vehicles with the lights activated or slow down and pass with caution if it is not possible to safely change lanes.

This law applies to the following vehicles:

POLICE-FIRE-RESCUE-AMBULANCE-ROAD SERVICE

Road Service vehicles include tow trucks and courtesy vehicles operated by the Michigan Department of Transportation.

State Law: Move over or slow down for stopped emergency vehicles

MOVE OVER!

On roads with two or more lanes of travel in the same direction

When approaching a stationary emergency vehicle with its emergency lights activated carefully move over into an open lane.

If this is not possible due to traffic, weather, or road conditions, slow down and pass with caution, allowing the emergency vehicle as much space as possible.

Penalty

A motorist found responsible for violating the Move Over Law is guilty of a misdemeanor and is subject to four points on their driver's license and fines and fees of approximately \$150.

Keep your flashers on for safety

MOVE OVER!

On roads with one lane of travel in each direction

When approaching a stationary emergency vehicle with its emergency lights activated carefully move over into an open adjacent lane.

If this is not possible due to traffic, weather, or road conditions, slow down and pass with caution, allowing the emergency vehicle as much space as possible

Motorists face enhanced penalties of up to 15 years in prison and/or a \$7500 fine if the violation causes injury or death to a police officer, firefighter, or other emergency response personnel.